

# BELLGROVE SHOW HOME

5 Homestead, Bellgrove, Rangiora



# BELLGROVE RANGIORA

Rangiora, a bustling town, well known for its country atmosphere and shopping, is 27km north of Christchurch, in the heart of Waimakariri District.

The town is the center of a agricultural, horticultural, fruit-growing, forestry and mixed farming area. Orchards, farm tours, vineyards, olive groves and racing stables, are part of Rangiora’s many attractions.

Rangiora means ‘Day of peace’ in Maori, and was first farmed in the 1850’s, extensive areas of native bush were felled and the land cleared. The first permanent settler was Charles Torlesse. During the 1860’s a number of swamps around the town site were drained and the direct road to Christchurch was built.

Rangiora’s has a population of around 20,000 people, enjoys a mild climate and low rainfall. Rangiora claims to match Nelson’s 2,500 sunshine hours each year.

There are great places to meet and eat with quality dining, sidewalk cafes and wonderful parks. Local produce is featured in menus including wine, cheese, truffles, saffron and world-famous mead.



Photo's from bellgrove.co.nz



# IN THE AREA



## SCHOOL'S

St Josephs School	1	1.8 km
Rangiora Borough School	2	2.5 km
Rangiora High School	3	1.5 km

## PARKS

Victoria Park	4	1.6 km
Northbrook Wetlands	5	1.8 km
Millton Memorial Park	6	3.4 km

## FOOD

The Brook Bar	7	3.7 km
La Luna Eatery & Bar	8	1.6 km
The Plough Hotel	9	2.3 km

## CLOSE TO

Kaiapoi	10	11.2 km
Christchurch	11	29.7 km
Pegasus	12	7.5 km
Oxford	13	33.8 km
Amberley	14	24.5 km

## BEACHES

Pegasus Beach	15	10.9 km
Woodend Beach	16	9.2 kms
Waikuku Beach	17	10.4 kms



5 HOMESTEAD DRIVE BELLGROVE RANGIORA

FLOOR AREA: 249m<sup>2</sup> | SITE AREA: 604m<sup>2</sup>

4

3

2

2

2

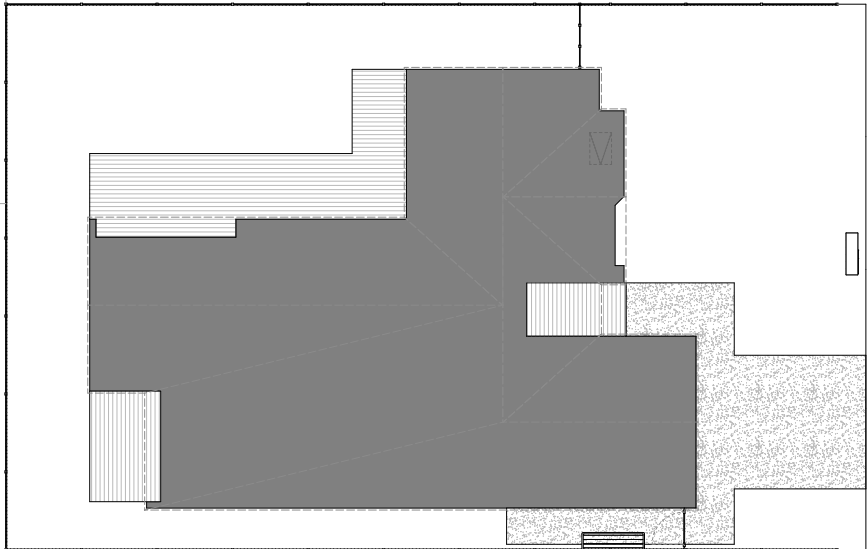
✓



FLOORPLAN



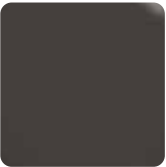
▼ Site Plan



EXTERIOR - COLOURS



CLADDING  
Plaster - Cerano  
Cedar - Driftwood



ALUMINIUM JOINERY  
Flaxpod



ROOF  
Metalcraft Espan 340  
Flaxpod



GARAGE DOOR  
Flaxpod



DOWNPIPES  
Flaxpod



GARAGE DOOR REVEALS  
Flaxpod



GUTTER  
Flaxpod



FRONT DOOR  
Flaxpod

EXTERIOR - MATERIALS



MAIN CLADDING  
Plaster



FEATURE CLADDING  
Cedar



FEATURE SOFFIT  
Cedar



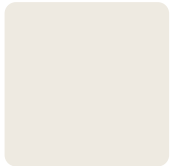




PAINT AND FLOORING



MASTER BEDROOM  
No Info



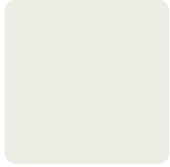
WIR & ENSUITE  
Resene  
Quarter Blanc



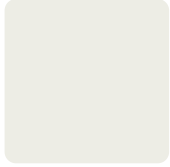
MEDIA ROOM  
Resene  
Earth Green



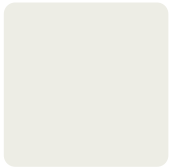
POWDER ROOM  
Resene  
Armadillo



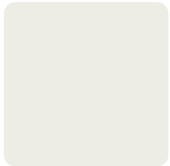
SKIRTING  
Dulux  
1/2 Mt Aspiring



CEILINGS  
Dulux  
1/2 Mt Aspiring



GARAGE  
Dulux  
1/2 MtAspiring



DOORS & JAMBS  
Dulux  
1/2 MtAspiring

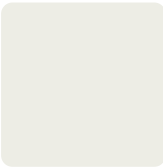


CARPET  
Bremworth/Kensho  
Insight



TIMBER LAMINATE  
Pergo  
Clouded Oak

JOINERY



LIVING WINDOW SEAT  
Laquered and painted  
1/2 Mt Aspiring



ENTRY AND DINING WALL  
Plaster - Cerano



GUEST BEDROOM 2 WINDOW SEAT  
Bestwood - Simply Eucalyptus  
Timberland Finish



MEDIA ROOM CABINERY  
Bestwood - Simply Eucalyptus  
Timberland Finish  
Melteca - Warm White - Naturale

JOINERY - LAUNDRY



BENCHTOP  
Laminex  
Seed



SPLASHBACK  
Metro Tiles  
Minokoyo White Matt



CABINERY  
Melteca - Warm White - Naturale  
(Open Shelves) Laminex - Seed



FLOORING & SKIRTING  
Belfield Rock





KITCHEN

FIXTURES AND FITTINGS		APPLIANCES	
Benchtop	Kitchen and Pantry Neolith - New York Silk	Oven	Electrolux 60cm ultimate taste 900 multifunction pyrolytic duo oven
Cabinetry	Kitchen and Pantry Bestwood - Simply Eucalyptus Timberland Finish	Hob	Electrolux 90cm ultimate taste 900 multifunction hybrid gas & induction cooktop
	Laundry Melteca - Warm White - Naturale	Dishwasher	Electrolux 60cm fully integrated dishwasher
	Laundry (Open Shelves) Laminex - Seed	Rangehood	Robinhood 90cm powerpack with black glass
Splash Back	Kitchen Neolith - New York Silk  Laundry Tile - Minokoyo White Matt		
Kitchen Handles	Sharknose with metal strip		
Sink Mixer	Paini Cox stainless steel kitchen mixer with pullout spout		





BATHROOMS

MAIN BATHROOM		ENSUITE	
Shower	Tiled shower with frameless safety glass screen	Shower	Tiled shower with tiled recess
Vanity	Newtech Porsch 900mm wall hung vanity, one drawer	Vanity	Vanity by Millbrook Kitchens
Basin	Classico Basin	Basin	Liano II 580mm Pill under/over counter basin - Matte speckled
Bath	Newbury Island 1700m	Bath	Galleno 1500mm freestanding oval bath
Tapware	2x Paini Cox O2 shower mixer - Brushed Nickel Paini Cox Bath Spout - Brushed Nickel	Tapware	3x Paini Grip Shower - Brushed Nickel 2x Paini Grip Wall mounted basin mixer - Brushed Nickel Paini Cox bath spout - Brushed Nickel
Mirror	Standard Mirror		Caroma Urbane II rail shower with 300mm overhead - Brushed Nickel
Toilet	LeVivi Messina back to wall rimless toilet		
Tiles	Floor / Walls Dakota Tiles - Belfield Rock	Mirror	Newtech backlit Pill mirror
		Toilet	Caroma Urbane II cleanflush Invisi Series II wall faced toilet
		Tiles	Dakota Tiles - Clutha Urban - White (Floor, skirting , shower floor, shower walls, wing wall and top of wall with bath) Dakota Tiles - Canal Roma Marfil (Shower recess, vanity splashback from vanity to ceiling, bath wall wall floor)



BATHROOMS - CONTINUED

POWDER ROOM

Toilet	Caroma Urbane II cleanflush Invisi Series II wall faced toilet
Vanity	Vanity by Millbrook Kitchens
Basin	Oli round stainless steel vessel basin - Brushed Gunmetal
Tapware	Paini Grip tall basin mixer - Gunmetal
Mirror	Blob mirror
Tiles	Venice Gregio Matt 600x600mm





## WHY CHOOSE MIKE GREER HOMES

Quite simply, we believe that we have more to offer from every angle.

We have extensive experience across the entire construction industry. With a large portfolio of homes already built throughout the country, we have the experience and scale to provide award winning quality and value.

Because we are independently owned and have operations throughout New Zealand, we have valued relationships with nationwide suppliers, which enables us to have the capability and commitment required to deliver a consistent product that stands the test of time in terms of both design and construction.



### OUR BRANDS

We partner with the best New Zealand and international brands.

This maximises the value and ensures a better home to live in today and into the future.

Our scale enables us to bring you reputable brands and products at the best possible prices without compromising on quality.



### HEALTHY HOMES

Our homes comply with the required healthy homes standards.



### MASTER BUILD GUARANTEE

As registered members of the industry leading Master Builders Association of New Zealand, we provide a 10 year Master Build Guarantee, meaning you can rest easy knowing you're protected.





## The Mike Greer Group

---



### BUILDING HOMES

- Government Housing
- Affordable Homes
- First Homes Buyer
- Growing Families
- Turn Key
- House and Land
- Design and Build
- Downsizing



### GROWING INVESTMENTS

- Investment Properties
- Estate Properties
- City Residences
- Rental Desirable Locations
- Higher Education Residences



### COMMERCIAL DEVELOPMENTS

- Multi Residential
- Multi-Unit Residential
- Social + Community Housing
- Retail And Commercial
- Large Scale Builds
- Build To Rent
- Developments
- Early Childhood Centres
- Mixed Use
- Multi Level Apartments
- Retirement Villages



mikegreerhomes.co.nz

